

NuLOOK TRI-GAS ADAPTER SYSTEM

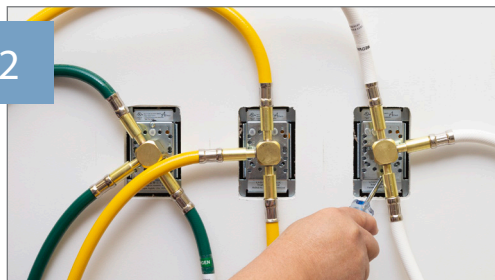
Convert a single patient room to manage 3 patients in 1 hour
without special tools, cutting or brazing.

Step 1



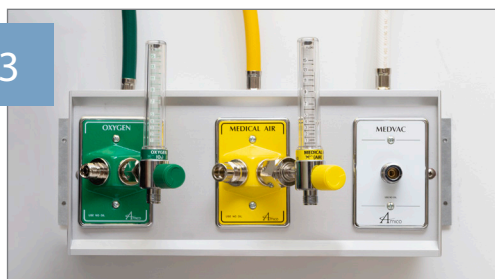
Remove existing front and trim plates

Step 2



Attach Amico's Tri-Gas Adapter

Step 3



Mount consoles to the wall at desired
locations and connect the hoses

Included in the System

Three Consoles with Oxygen, Air, and Vacuum Outlets installed

All Hoses and Flowmeters

Amico Tri-Gas Adapters

Amico

www.amico.com